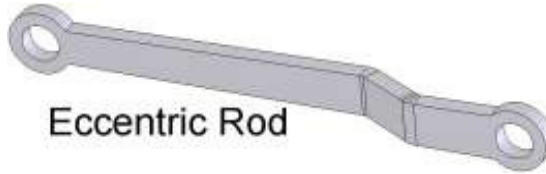


Eccentric Rod - "Victory" version

The eccentric rods can now be fitted to connect the return cranks and the expansion links. These rods are slightly tapered and the thicker end has a 'joggle'. They are attached by 6 BA shouldered crank pins with a 5 BA steel washer between. The thicker end goes to the rear with the 'joggle' outwards.

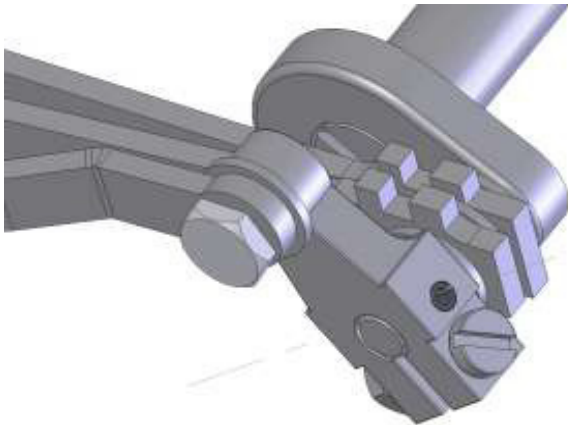


Return Crank

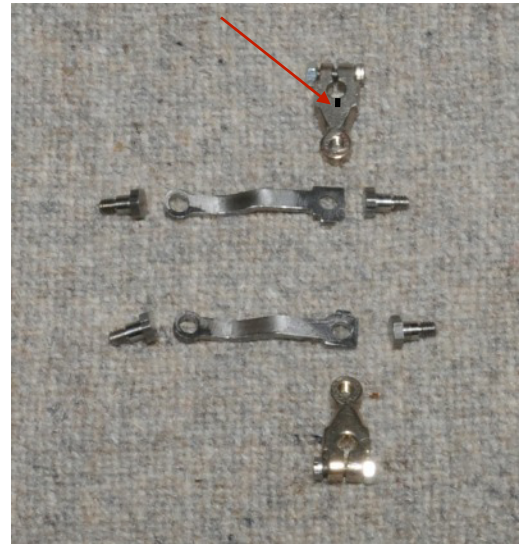
See: "Construction of simplified Walschaerts Valve-gear"

Make sure that the return cranks do not move when fitted.

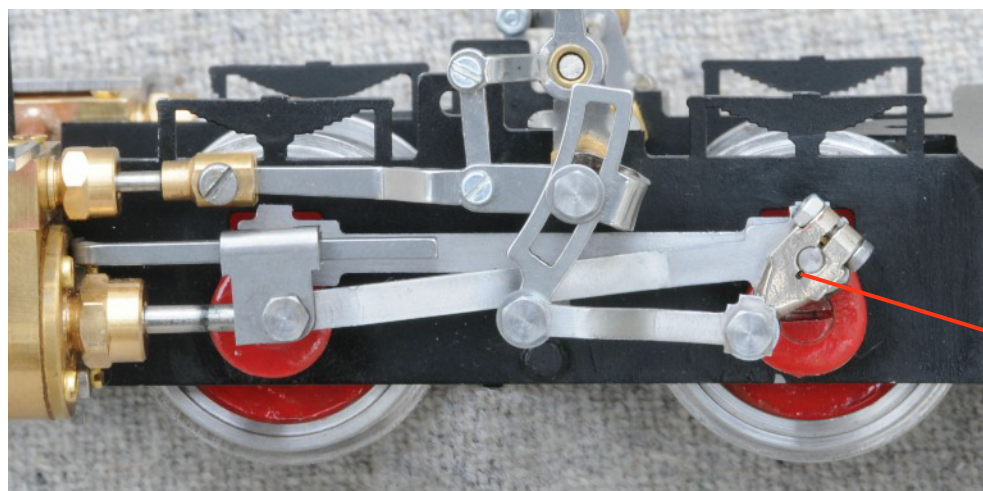
The Roundhouse approach is to drill a hole so that the return crank can be pinned in the correct position.



If extending the narrow slot, cut here as shown.



This shows the return crank and eccentric rod as shown on the Roundhouse picture and previous page. I did not drill for the pins but I did increase the clamping slot by making a very narrow cut for 1mm as shown by locating it into a vice and cutting it with a small saw. An M2 x 12mm socket cap and nut is supplied amongst the fixings provided by the Association as it is easier to clamp the return crank with a socket screw than with the cheese head screws. Once I had checked that



the return was correctly positioned it was held in place with Loctite (an adhesive-like fluid used to lock screws or nuts in place). Make sure that no Loctite comes into contact with the connecting and

This shows the increased slot as discussed above.